

FREEHOLD



House - End Terrace

REEDE ROAD, DAGENHAM, RM10 8DU

Guide Price

£400,000

FEATURES

- THREE BEDROOMS
- THROUGH LOUNGE DINER
- AMPLE OFF ROAD PARKING
- EASY WALK TO HEATHWAY
- UPSTAIRS BATHROOM
- KITCHEN
- SOUTH ASPECT 100' GARDEN
- COUNCIL TAX C



STEPS

Estate Agents

3 Bedroom House - End Terrace located in

100' APPROX GARDEN... South facing. Large parlour style THREE BEDROOM HOUSE easy walk to HEATHWAY. 24' through lounge, fitted kitchen, side access, off road parking for three cars. Guide price £400,000-£425000

Call us on

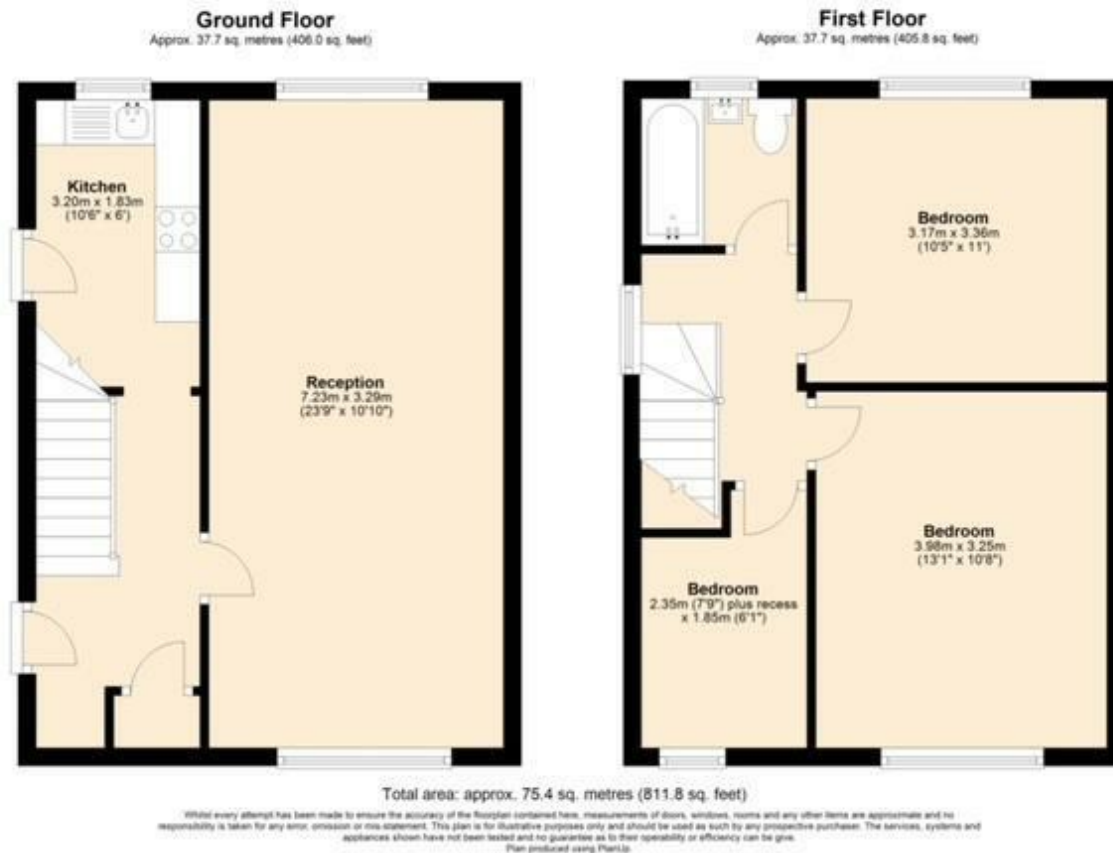
020 8593 5933

dagenham@steps.me.uk

www.steps.me.uk

Council Tax Band

C



| Energy Efficiency Rating | | |
|--|--------------|-----------|
| | Current | Potential |
| <i>Very energy efficient - lower running costs</i> | | |
| (92 plus) A | | |
| (81-91) B | | |
| (69-80) C | | |
| (55-68) D | | |
| (39-54) E | | |
| (21-38) F | | |
| (1-20) G | | |
| <i>Not energy efficient - higher running costs</i> | | |
| England & Wales | EU Directive | |
| | 2002/91/EC | |

Agents Note: Whilst every care has been taken to prepare these particulars, they are for guidance purposes only. All measurements are approximate and are for general guidance purposes only and whilst every care has been taken to ensure their accuracy, they should not be relied upon and potential buyers are advised to recheck the measurements.

